

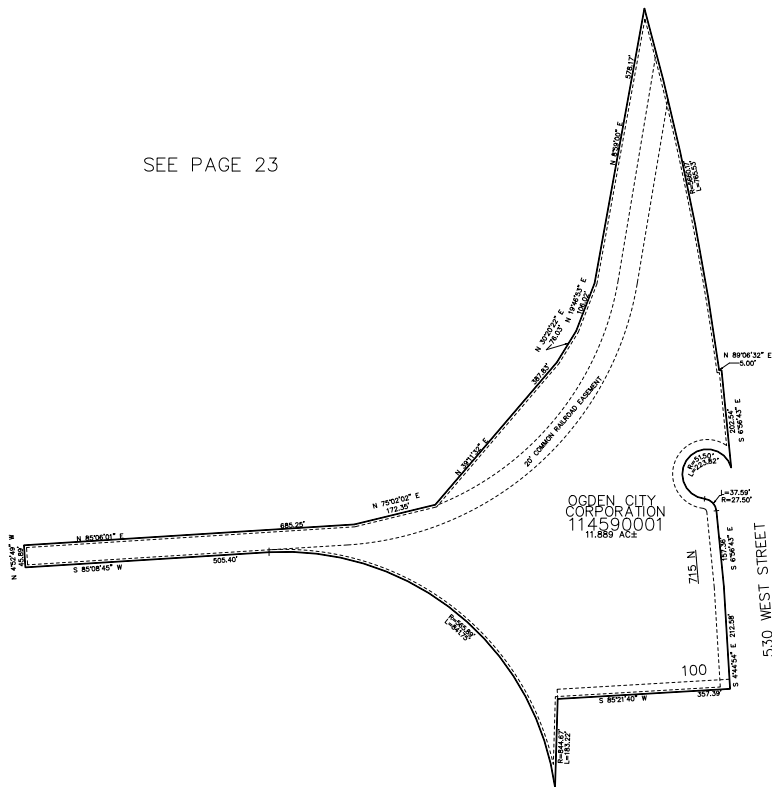
PART OF THE E.1/2, OF SECTION 7, T.6N., R.1W., S.L.B. & M.
BUSINESS DEPOT OGDEN – PLAT 39 FIRST AMENDMENT

TAXING UNIT: 25

IN OGDEN CITY
 SCALE 1" = 200'

SEE PAGE 23

SEE PAGE 23



SEE PAGE 23

10' UTILITY & DRAINAGE EASEMENTS EACH
 SIDE OF PROPERTY LINES AS INDICATED
 BY DASHED LINES EXCEPT AS OTHERWISE
 SHOWN.

FOR COMPLETE SURVEY DATA SEE
 ORIGINAL DEDICATION PLAT IN
 BOOK 96, PAGE 43 OF RECORDS.